



Distribution of cash assistance to displaced pregnant and lactating women in Port Sudan. © IOM SUDAN 2023

HIGHLIGHTS

In response to the armed conflict that erupted in April 2023, the International Organization for Migration (IOM) remains committed to stay and deliver in Sudan. During the past week, we have:

- Successfully organized a cross-border convoy from Chad to arrive in West Darfur, carrying critical aid to reach over 46,000 people affected by the ongoing conflict across Darfur.
- Organized the distribution of 550 Non-Food Item (NFI) kits to households of internally displaced persons (IDPs) in Red Sea state, between 21 and 27 December 2023, reaching approximately 2,750 individuals.
- Completed the distribution of 1,556 family hygiene kits to IDPs within communities in Northern state between 19 and 23 December 2023.
- Initiated cash distribution targeting 300 IDPs and host community members in Port Sudan, Red Sea state, as a response to support populations affected by the ongoing crisis in accessing available protection services.
- Continued the distribution of new-born baby kits benefitting 60 pregnant and lactating women who fled Aj Jazirah to Kassala, through IOM Kassala's protection team.
- Celebrated International Migrant's Day (IMD) together with protection partners in Kassala state, as well as with migrant, host community and IDP representatives and members on 21 December 2023.
- Supported 4 stranded migrants departing to Canada.

With the highest number of internally displaced people globally, the situation in Sudan is dire. Urgent action is needed to reach ALL in need.

KEY FIGURES



24.8 million
PEOPLE IN NEED OF HUMANITARIAN ASSISTANCE IN SUDAN

7,071,675
INTERNALLY DISPLACED PERSONS (IDPs)
(AS OF AUGUST 2023)

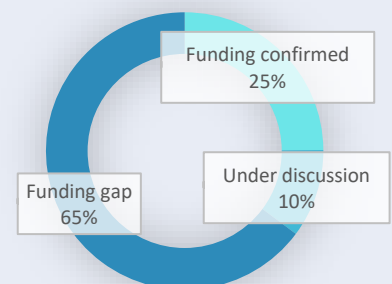
5,855,848
DISPLACED WITHIN SUDAN (SINCE 15 APRIL 2023)

1,523,350
CROSS-BORDER MOVEMENTS RECORDED
(SINCE 15 APRIL 2023)

550,070
PEOPLE REACHED IN SUDAN

18
STATES REACHED IN SUDAN (IN ADDITION TO ABYEI PCA)

FUNDING (AS OF 17 DECEMBER 2023)



Your donation can help provide life-saving aid such as food, water, shelter, and medical supplies to those who need it the most. Every little helps.

[DONATE NOW](#)

OPERATIONAL CONTEXT

After eight months of conflict, food remains a primary concern of internally displaced persons (IDPs) in Sudan. Most (96%) IDPs report that food is available but unaffordable in the markets. Food insecurity has reached a record high in Sudan, with 37% of the population (17.7 million people) facing high acute food insecurity. WFP warns of catastrophic hunger in conflict hotspots by the time lean season arrives in May 2024.

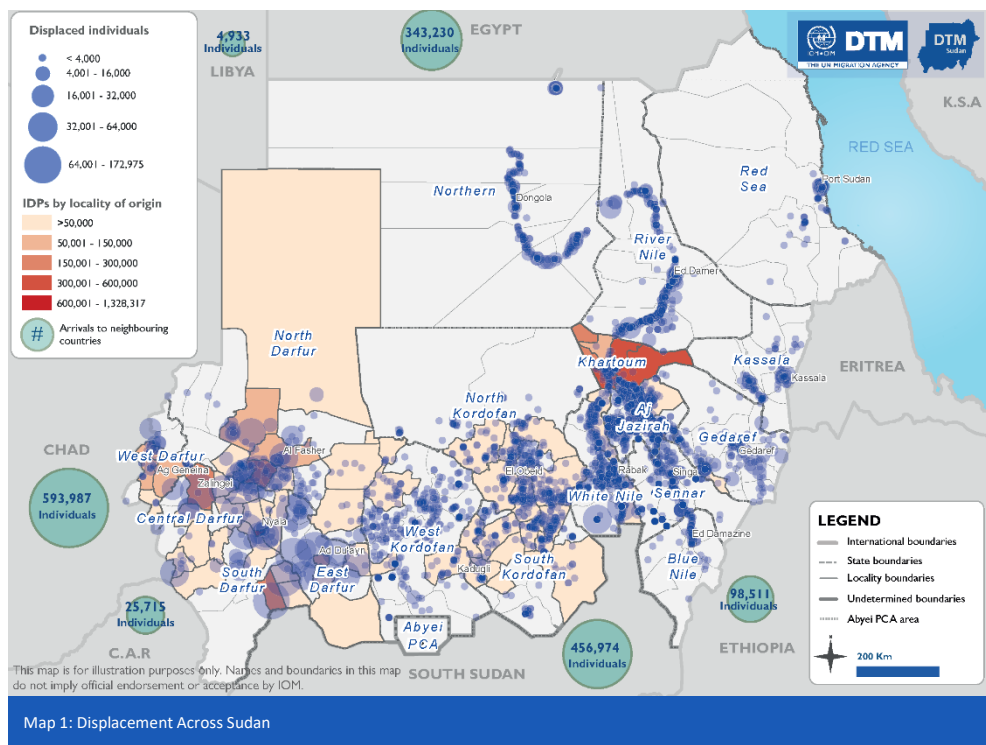
SITUATION

The conflict that broke out on 15 April 2023 between the Rapid Support Forces (RSF) and the Sudanese Armed Force (SAF) continues to have devastating consequences for millions of civilians in Sudan. More than 12,000 people have been killed and half of the population (24.7 million people) are estimated to be in need of humanitarian assistance. At the end of August 2023, Sudan hosted approximately 7.1 million IDPs, including 3.9 million displaced by the ongoing conflict and 3.2 million IDPs in protracted displacement pre-April 2023. Sudan is now facing the world's largest internal displacement crisis with more than 5.8 million people displaced to 6,159 locations across all 18 states in the last eight months alone, in addition to the pre-existing IDP caseload.

Clashes have had a severe impact on civilians, with reports of widespread human rights violations, forced displacement, and killings. All forms of gender-based violence (GBV) are increasing and the number of people in need of GBV services has risen to over 4 million. Women and girls who are displaced, in transit, in temporary shelters, and awaiting visas at border crossings are at extremely high risk of sexual violence. The GBV Sub-cluster warns the GBV survivors are facing life-threatening consequences such as strong suicidal tendencies.

Shortages of other basic goods such as water, medicines, and fuel have become extremely acute across the country as a result of the disruption of normal trade routes and limited access, prices have dramatically increased, making it unaffordable for many people to meet their basic needs. This is further exacerbated by the recent collapse and slow recovery of banking and financial services, frequent interruptions to internet, telecommunications and electricity supply, and destruction of health facilities. The health sector is collapsing due to repeated attacks, looting and occupation of medical facilities and hospitals. Sudan is facing multiple outbreaks of cholera, dengue, malaria and measles. The number of suspected cholera cases increased to 8,267, including 224 associated deaths, across 46 localities.

The deteriorating situation in Sudan also has dramatic implications on neighbouring countries, many of which are grappling with their own protracted crises. Sudan shares borders with seven countries, spanning three regions, and is an important migration country at the intersection between countries in East and Horn of Africa and Libya and Egypt, along the Central Mediterranean route, as well as for migrants heading towards the Gulf, via the Northern route. Since the outbreak of the crisis, over 1.5 million people have fled into neighbouring countries – namely Chad (39%), South Sudan (30%) and Egypt (22.5%). Approximately 62% of arrivals tracked in those countries were Sudanese nationals and 38% were returnees and third country nationals (TCNs).



OPERATIONAL UPDATES

DISPLACEMENT TRACKING MATRIX (DTM)

IOM's Displacement Tracking Matrix (DTM) tracks, monitors and analyses displacement and population mobility to provide a better understanding of movements and evolving needs of displaced populations across all states in Sudan.

Since 15 April, DTM has published 18 situation reports, 14 weekly displacement snapshots, 3 monthly displacement overviews, 131 early warning flash reports and 34 datasets that can be found [here](#).

SHELTER AND SETTLEMENTS

IOM has distributed emergency shelter (ES) and non-food items (NFI) to 71,012 people in Aj Jazirah, Blue Nile, Gedaref, Kassala, North Darfur, North Kordofan, Red Sea and South Kordofan states, since the conflict erupted.

As part of IOM's common pipeline mechanism, 106 containers with relief items have been received in Port Sudan. The items are being delivered to humanitarian partners for distributions across Sudan.

WATER, SANITATION & HYGIENE (WASH)

Since 15 April 2023, IOM has reached 389,368 through WASH interventions, including distributions of hygiene kits and other WASH supplies, construction and rehabilitation of water points and sanitation facilities, in addition to hygiene and garbage collection campaigns in Aj Jazirah, Blue Nile, Gedaref, Kassala, Khartoum, North Darfur, Northern, Red Sea, South and West Kordofan states

HEALTH AND NUTRITION

IOM has provided primary health services and specialized healthcare to 48,454 people in IDP and refugee camps and gathering sites, reception and transit centres, at points of entry and key migration routes, and host communities since the conflict began. The assistance is provided through eight static health facilities, four mobile clinics, two Migration Resource and Response Centres (MRRCs), and a Migration Health Assessment Centre in Aj Jazirah, Blue Nile, Gedaref, Kassala, Northern, Red Sea and White Nile states, as well as Abyei PCA.

IOM also provides capacity building to community healthcare workers and midwives, as well as conducts community-level health promotion and awareness raising about health risks.

FOOD SECURITY & LIVELIHOODS (FSL)

IOM is currently supporting community-led agriculture initiatives for winter cropping and other income-generating activities in Aj Jazirah, Blue Nile and Gedaref states, targeting 600 households.

As part of its protection assistance, IOM also provided food support to 3,472 migrants in extremely vulnerable situations.

CASH-BASED INTERVENTIONS (CBI)

To increase the ability of crisis-affected communities to meet their basic needs in a way that is most suited to their preferences, IOM has provided cash assistance to 32,290 households in Sudan. IOM also provides grants to community-based organizations (CBOs) as seed funding for livelihoods and other life-sustaining activities.

RAPID RESPONSE FUND (RRF)

The RRF provides a streamlined and flexible grant application and disbursement process to finance the localized and life-saving emergency response. Through the RRF, IOM and its partners have so far reached 392,249 people through ES, NFI, WASH, Health, Nutrition, FSL, CBI, MHPSS and Protection interventions.

MENTAL HEALTH & PSYCHOSOCIAL SUPPORT (MHPSS)

IOM has so far reached 3,256 people with psychological first aid (PFA) and other MHPSS services in 16 states. The assistance includes group and individual counselling, psychoeducational sessions on stress management, and referrals to specialized care.

PROTECTION

IOM places protection at the centre of its operational work, recognizing the heightened risk of violence, neglect, deliberate deprivation, discrimination, abuse and exploitation, affecting populations on the move and host communities in Sudan.

Since 15 April 2023, IOM has reached 35,658 people with protection assistance through IOM's MRRCs, mobile clinics and partners. Assistance includes vulnerability assessments, case management, tailored cash/in-kind support, information sessions, and referrals to specialized services, as needed. IOM also supports its beneficiaries to obtain identity documents, legal counselling on land and property rights, and representation in court

MOVEMENT ASSISTANCE

IOM has assisted 183 migrants stranded by the ongoing conflict to return to their countries of origin. In coordination with UNHCR, IOM resettled 258 refugees in Canada, and the United States, in addition to assisting an unaccompanied minor to reunite with his family in Belgium. IOM also assisted another 39 people to be reunited with their families in the United Kingdom and Canada. Additionally, IOM provided humanitarian transportation to 6 stranded migrants, refugees and IDPs who lacked the means to leave conflict zones or areas of extreme hardship.

HUMANITARIAN BORDER MANAGEMENT

In order to facilitate, assist and protect populations affected by the clashes in Sudan as they (attempt to) cross the borders, IOM supports frontline workers in responding to the increased pressure at border crossings. This includes the training of border officials in rights-based humanitarian border management, protection, identification of potential victims of trafficking and referral of vulnerable migrants. The assistance also includes supporting relevant partners and initiatives in border areas and coordinating closely with partners in neighbouring countries.

BASIC INFRASTRUCTURE

IOM also supports the construction of critical community infrastructure – such as roads, markets, health centres, schools and community centres – applying a [community-based planning approach](#) to prioritise investments together with the communities. So far, 854 individuals have benefitted from the new constructions. to prioritise investments together with the communities. So far, 854 individuals have benefitted from the new constructions.



Mariam, 24, has found refuge in Kassala state. ©IOM SUDAN 2023

QUOTE

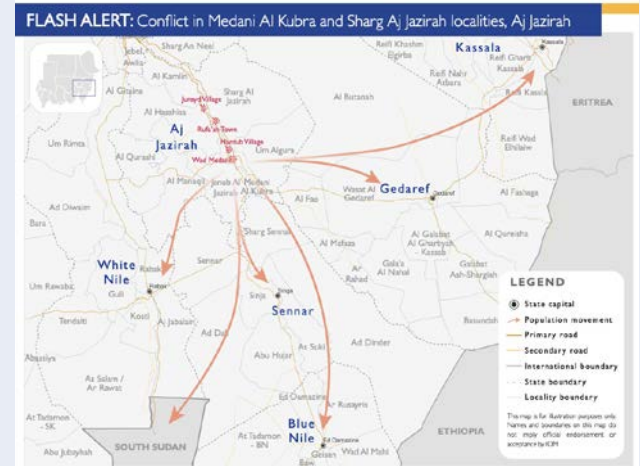
"I pray that Sudan can recover from this nightmare and all this suffering ends now."

-Mariam

At 24, Mariam's dreams were abruptly uprooted when violence in Khartoum erupted in April. Forced to flee with her family, she left behind the comforting walls of home and the familiar rhythm of student life. Moving from shelter to shelter, her family is now taking refuge in Kassala state.

KEY ADVOCACY POINTS

- **Funding is urgently needed** – not only for life-saving but also life-sustaining and resilience building interventions – to ensure continued operational presence and critical humanitarian support in the first half of 2024
- With the rising levels of violence and displacement in the Eastern parts of Sudan, **investments are needed to expand cross-border capacities at the Chad-Sudan border** to access hard-to-reach areas and transport relief supplies from neighbouring countries.
- **Aid investment is also required in neighbouring countries**, for returnees, border and host communities, to mitigate the impact of the crisis on local populations and to avoid a regional spillover of the conflict.
- **IOM is deeply concerned about the evolving security situation in Aj Jazirah state**, a key humanitarian hub in the country and a transit and temporary destination for many displaced populations and calls on warring parties to guarantee safe passage of fleeing populations as well as secure humanitarian access to communities in need. Aj Jazirah state, a key humanitarian hub in the country and a transit and temporary destination for many displaced populations and calls on warring parties to guarantee safe passage of fleeing populations as well as secure humanitarian access to communities in need.
- **IOM remains committed to ensure that no one is left behind**, including IDPs, returnees, refugees, Third-Country Nationals (TCNs), and other conflict-affected populations.



Over 500,000 Sudanese Displaced by the Latest Surge in Fighting

IOM DTM Field teams reported that **the recent clashes in Aj Jazirah, from 15 December to 23 December**, have triggered the displacement of an estimated total of 509,796 individuals. Of those, approximately 234,000 IDPs had previously sought shelter in Aj Jazirah from Khartoum and were subjected to secondary displacement, whereas 275,796 IDPs reportedly originated from Aj Jazirah. As indicated, about 40 per cent (205,460 IDPs) of the total affected population found refuge in other locations across Aj Jazirah, while 60 per cent (304,336 IDPs) fled to Gedaref (64,551 IDPs), Sennar (60,000 IDPs), Red Sea (50,035 IDPs), White Nile (40,750 IDPs), River Nile (30,000 IDPs), Kassala (30,000 IDPs), Blue Nile (15,000) and Northern (14,000 IDPs).

IOM SUDAN'S RESPONSE IS SUPPORTED THROUGH THE GENEROUS CONTRIBUTION OF OUR DONORS



CONTRIBUTING TO THE FOLLOWING SUSTAINABLE DEVELOPMENT GOALS



PORT SUDAN SUB-OFFICE CONTACT

PORT SUDAN, RED SEA STATE
 Transit, Plot No. 6, Block Z-5
 P.O. Box 8322 Khartoum, Sudan
 Telephone: +249 156554600/1/2
 E-mail: iomkhartoum@iom.int

MIGRANT RESOURCE AND RESPONSE CENTRES

GEDAREF, GEDAREF STATE
 Sadaga Area, Block 09, Building 50, Gedaref Town, Gedaref
 Telephone: +249 922 406 691
KASSALA, KASSALA STATE
 Al Morbat Area-Police Street Block 16, Kassala Town Building No. 378