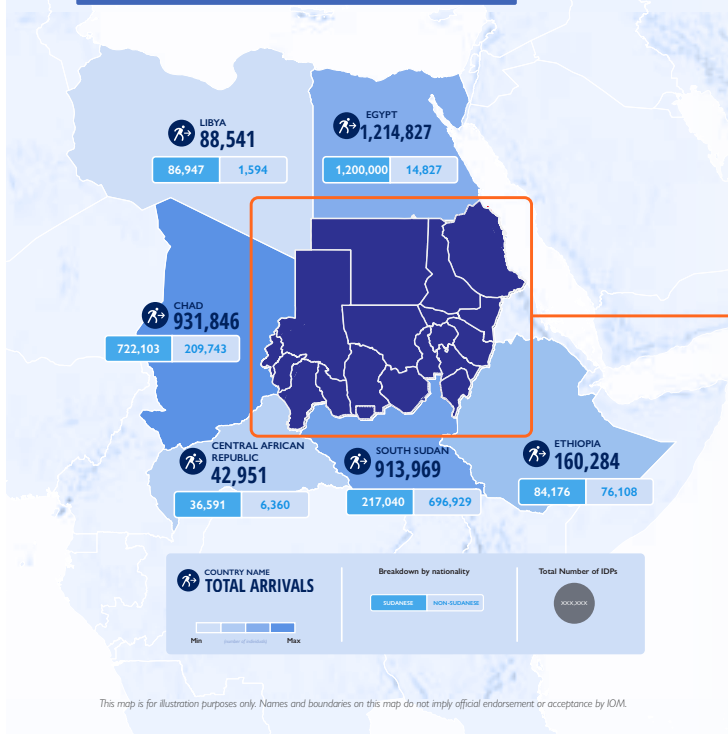
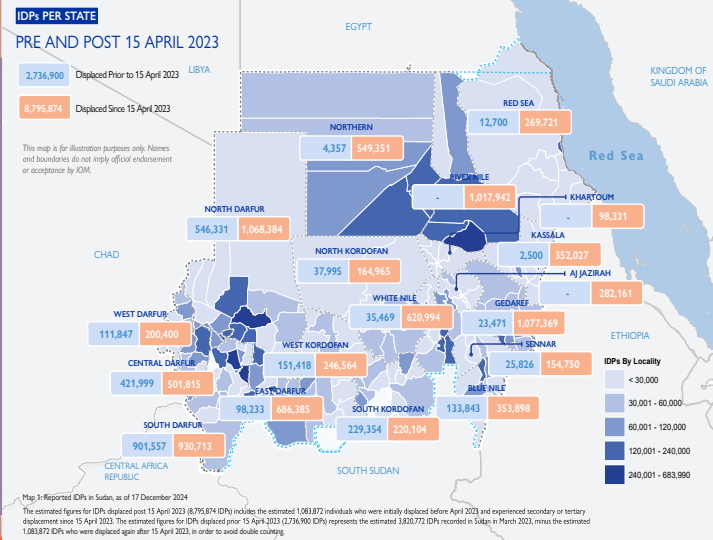


DISPLACEMENT OVERVIEW: SUDAN AND NEIGHBOURING COUNTRIES



KEY FIGURES



Data as per Sudan Mobility Update 13 | International Organization for Migration (IOM), Dec 24 2024. DIM Sudan Mobility Update (13). IOM, Sudan

HIGHLIGHTS

Over the last 2 weeks:

In Sudan, 3,335 individuals assisted with protection support, including awareness raising activities and community outreach, direct tailored in-kind support (food, and NFIs), protection monitoring and vulnerability assessments, legal assistance, and awareness raising sessions on prevention of sexual exploitation and abuse (PSEA).

In South Sudan, 25,808 individuals supported with Onward Transportation Assistance (OTA) to reach their final destinations.

In Ethiopia, 6,765 individuals assisted with health support, including health and nutrition screenings, secondary healthcare services, sexual and reproductive health services, and primary healthcare consultations in health facilities and mobile clinics.

In Libya, 1,474 individuals reached with shelter support, including through the distribution of NFIs and hygiene kits in Alkufra, Ejadabia, and Tripoli.

25,094 PEOPLE REACHED OVER THE LAST 2 WEEKS

2M PEOPLE REACHED IN 2024

3.5M PEOPLE REACHED SINCE THE OUTBREAK OF THE CRISIS IN APRIL 2023

Over twenty months into the conflict, Sudan is in the grip of a complex crisis that has forced over 11.5 million people to flee their homes. An additional 3.4 million cross-border mixed movements have been recorded into neighbouring countries since the onset of the conflict in April 2023.

Civilians have repeatedly borne the brunt of the crisis' impacts, including displacement, famine, epidemics, the collapse of livelihoods, and sudden onset climatic shocks. This has left an estimated 30.4 million people—approximately 64% of the total population—in need of humanitarian assistance in 2025 in Sudan alone. This is a 23% increase compared to the people in need in 2024, indicative of the severe risks posed to the resilience of the Sudanese people.

Acute food insecurity has reached historic levels. [Recent data](#) published by the Integrated Food Security Phase Classification (IPC) Famine Review Committee (FRC) in December 2024 has detected

famine in five areas, indicating an expansion and deepening of the food insecurity crisis from August earlier in the year due to the ongoing conflict. Of particular concern is the detection of famine conditions in Al Salam and Abu Shouk IDP camps in North Darfur. Five additional areas, most of which are also in North Darfur, are at risk of famine between December 2024 and May 2025. The risk of famine is prevalent across the Central Nuba mountains and localities across North and South Darfur, which are expected to receive high influxes of IDPs in the future.

This comes in the wake of recently [published data](#) from IOM's Displacement Tracking Matrix (DTM), indicating 423,389 individuals have been displaced in Al Fasher between 1 April and 16 December 2024. Field teams reported shelling across neighbourhoods in Al Fasher, as well as IDP camps and surrounding residential areas, including Abu Shouk and Zamzam.

Those living in displacement are the most vulnerable to famine conditions, being unlikely to access food and benefit from the recent harvest season. Given the severity of the situation, households are likely to resort to extreme and negative coping mechanisms, leading to dire protection risks and increasing vulnerabilities to violence, exploitation, and abuse. Malnutrition will worsen existing health vulnerabilities, and hinder the ability of IDPs to breastfeed children, seek livelihood opportunities, attend school, or move in search of better access to goods and services. The disruption of supply chains and markets have further exacerbated the situation; as per [DTM data from November](#), 90% IDPs reported food as being available but unaffordable.

IOM strongly advocates for expanded humanitarian access, through cross-border and cross-line routes, to reach all those in need. Rapid, coordinated, and concerted action is required to prevent populations from slipping into famine conditions and save lives. An integrated, multisectoral response is urgently needed to respond to multidimensional needs – as such, it is critical to match food and nutrition funding with WASH, health, and protection assistance. While IOM is already responding in Darfur through its Rapid Response Fund (RRF), most recently leveraged to provide health assistance in Tawila, North Darfur, additional funding is needed to scale the response in hard-to-reach areas. A failure to scale up the response will lead to increased vulnerabilities, further deepening humanitarian needs in neighbouring countries as people move across borders in search of security, food and basic services.

The complex humanitarian situation and the mixed nature of the movements across Sudan call for a protection and conflict sensitive and needs-based response. Building on IOM's work in 2023 and 2024, IOM's [2025 Regional Crisis Response Plan for Sudan and Neighbouring Countries](#) will aim to address the needs of IDPs, migrant returnees, Third Country Nationals (TCNs), host communities, and refugees in Sudan and the neighbouring countries of Chad, South Sudan, Egypt, Ethiopia, Libya, Central African Republic, and Uganda. IOM's response contributes toward saving lives and protecting people on the move and identifying solutions to displacement, while also facilitating regular pathways for safe, orderly, and regular migration.



© IOM 2024/Fedza Lukovic

2 week reporting period indicated below covers the period 18-31 December.

SUDAN

2 LAST WEEKS
12,801
 PEOPLE REACHED OVER THE LAST 2 WEEKS*

2024
1,716,936
 PEOPLE REACHED IN 2024

SINCE APRIL 2023
2,857,723
 PEOPLE REACHED SINCE THE ONSET OF THE CRISIS IN APRIL 2023



2,900 individuals reached with shelter assistance in Zamzam camp, and 6,664 individuals reached with health assistance in Tawila, North Darfur state, via IOM's Rapid Response Fund (RRF).



14 refugees provided resettlement assistance to Canada in coordination with UNHCR.

The [spread of cholera](#) indicates significant health and WASH needs: as of 01 January 2025, nearly 50,000 cases had been reported across 11 states of Sudan. In a context where less than 25% health facilities remain functional in the hardest-hit areas and two thirds of the states face multiple disease outbreaks, the healthcare system teeters on the brink of total collapse. In response, IOM's RRF enabled the assistance of over 33,000 individuals in El Guraisha, Gedaref state with WASH support. The Organization is also scaling mobile health clinics to expand reach to the most vulnerable; most recently in December, IOM, in partnership with UNDP and the Ministry of Health, deployed a mobile clinic to Gedaref and Northern states.

On 27 December, [IOM's DTM](#) reported that 1,672 households were displaced from Geziret Aba and the surrounding villages in Rabak locality, White Nile due to heavy flooding across the locality since 18 December 2024. Given increased needs in the area, IOM has provided grants to two RRF partners to provide WASH, NFI, and health assistance. The partners will distribute 1,000 NFI kits, and assist over 46,000 individuals with WASH support, including water trucking, construction of water storage tanks, latrine construction and rehabilitation, and hygiene promotion activities, as well as material to support two cholera treatment centres to prevent spread of the disease.

The Adré crossing remains a critical entry route; however, additional restrictions on humanitarian operations within Darfur and new inspection procedures for humanitarian trucks going into conflict-affected areas in North Darfur are likely to lead to bottlenecks.

SOUTH SUDAN

2 LAST WEEKS
5,782
 PEOPLE REACHED OVER THE LAST 2 WEEKS

2024
123,960
 PEOPLE REACHED IN 2024

SINCE APRIL 2023
265,183
 PEOPLE REACHED SINCE THE ONSET OF THE CRISIS IN APRIL 2023

Per the DTM Sudan Mobility Update 13, published 24 December, 913,969 individuals were displaced from Sudan into South Sudan; 217,040 of them being Sudanese and 696,929 non-Sudanese.

During the reporting period, IOM reached:



25,808 individuals assisted with onward transportation assistance (OTA) to reach their final destinations.



3,191 individuals provided protection assistance, including community awareness raising sessions on gender-based violence (GBV) and PSEA.



1,405 individuals supported with free telecommunications services to enable them to reach their family and relatives, thereby supporting them to reach their final destinations. In addition, key messages were disseminated on services available at Transit Centres (TC)s, cholera prevention, and travel procedures.

Following the headcount conducted by ACTED at the Renk TC in Upper Nile State, bordering Sudan, IOM concludes that the number of people staying at Renk is five times higher than its capacity, increasing protection and health risks due to overcrowding. Of a total of 22,535 individuals in the transit centre, 86% were returnees – women and children make up

82% of this population. Given the overcrowding at the Renk TC, it is essential to scale up onward transportation assistance from Renk to the final destination. To ease congestion of the border, IOM advocates for setting up temporary waystations along key transit routes.

CENTRAL AFRICAN REPUBLIC

2024
1,145
 PEOPLE REACHED IN 2024

SINCE APRIL 2023
4,599
 PEOPLE REACHED SINCE THE ONSET OF THE CRISIS IN APRIL 2023

Per the DTM Sudan Mobility Update 13, published 24 December, 42,951 individuals were displaced from Sudan into the Central African Republic; 36,591 of them being Sudanese and 6,360 non-Sudanese.



Women and girls face disproportionately higher protection risks
 © IOM 2024

During the reporting period, IOM reached:



8,000 individuals reached with shelter and NFI support via the common NFI pipeline.



3,335 individuals supported with protection assistance, including awareness raising activities and community outreach, direct tailored in-kind support (food, and NFIs), protection monitoring and vulnerability assessments, legal assistance, and awareness raising sessions on prevention of sexual exploitation and abuse (PSEA).



1,040 individuals assisted with MHPSS support, including through individual and group counselling sessions, awareness raising sessions on MHPSS, psychological first aid (PFA) and recreational activities.



506 individuals provided direct health assistance at IOM's Migrant Resource Centre (MRC) in Kassala, Red Sea, and Gedaref states.



491 individuals were assisted with WASH services, including the maintenance of WASH facilities in Um Rakuba camp, such as emergency latrines, shower rooms, and handwashing stations.

CHAD

2024
111,895
PEOPLE REACHED IN 2024

2023
139,112
PEOPLE REACHED SINCE THE OUTBREAK
OF THE CRISIS IN APRIL 2023

Per the DTM Sudan Mobility Update 13, published 24 December, 931,846 individuals were displaced from Sudan into Chad; 209,743 of them being Sudanese and 722,103 non-Sudanese.

Over the past two weeks, 119 returnee households (737 individuals) crossed into Chad from Sudan via Adré, the majority being from Al Fasher (31%) and Ag Geneina (25%). As returnees continue to cross into Chad across Adré and other points, scaling resilience support to address the needs of returnees, refugees, and host communities will remain a critical priority for 2025, along with providing emergency assistance and responding to the most pressing urgent needs of the most vulnerable.

EGYPT

2024
12,000
PEOPLE REACHED IN 2024

2023
57,666
PEOPLE REACHED SINCE THE OUTBREAK
OF THE CRISIS IN APRIL 2023

Per the DTM Sudan Mobility Update 13, published 24 December, 1,214,827 individuals were displaced from Sudan into Egypt, 1,200,000 being Sudanese nationals and 14,827 being non-Sudanese nationals.

IOM in Egypt continues to implement activities to respond to the needs of Sudanese nationals in Egypt, including health, protection, and direct assistance. Most notably, IOM implements the Joint UN Programme along with Ministries of Health and Education, UNHCR, WHO, and UNICEF, providing access to key services, including healthcare, education, protection, and housing grants. The programme significantly bolsters access to services for individuals and communities, thus reducing heightened protection risks.

ETHIOPIA





2 LAST WEEKS
2,659
PEOPLE REACHED OVER
THE LAST 2 WEEKS

2024
63,953
PEOPLE REACHED IN 2024

2023
159,023
PEOPLE REACHED SINCE THE ONSET
OF THE CRISIS IN APRIL 2023

Per the DTM Sudan Mobility Update 13, published 24 December, 160,284 individuals were displaced from Sudan into Ethiopia; 84,176 of them being Sudanese and 76,108 non-Sudanese.

During the reporting period, IOM reached:

-  **6,765 individuals supported with health support**, including health and nutrition screenings, secondary healthcare services, sexual and reproductive health services, and primary healthcare consultations in health facilities and mobile clinics.
-  **2,701 reached with WASH assistance**, including to hygiene promotion sessions and promoting access to latrines at the Metema, Gizen Kurmuk Points of Entry (PoE).
-  **2,316 individuals provided MHPSS services** including psychoeducation, group and individual counselling, psychological first aid, and recreational activities at the Metema and Kurmuk PoEs.
-  **753 individuals reached through tailored services at the Migration Response Centre (MRC)** in Metema, Amhara region.

LIBYA







2 LAST WEEKS
3,582
PEOPLE REACHED OVER
THE LAST 2 WEEKS

2024
55,528
PEOPLE REACHED IN 2024

2023
88,388
PEOPLE REACHED SINCE THE ONSET
OF THE CRISIS IN APRIL 2023

Per the DTM Sudan Mobility Update 13, published 24 December, 88,541 individuals were displaced from Sudan into Libya; 86,947 of them being Sudanese and 1,594 non-Sudanese.

During the reporting period, IOM reached:

-  **1,474 individuals reached with shelter support**, including through the distribution of NFIs and hygiene kits in Alkufra, Ejdabia and Tripoli.
-  **798 individuals provided with medical consultations**, including referrals, in Ejdabia, Alkufra, and Al Jabal Al Akhdar.
-  **779 individuals reached through awareness raising sessions** on the risks of irregular migration.
-  **304 individuals assisted with protection support**, including vulnerability assessments and referrals.
-  **274 individuals provided with MHPSS support** including psychoeducation, counselling, and psychological first aid.
-  **223 individuals assisted with food baskets** in Alkufra and Ejdabia.

Data verification ongoing for Ethiopia and Chad; updated figures will be reported in the next situation update.



© IOM 2024/Fedza Lukovic

IOM ACTIVITIES ARE SUPPORTED BY:



From the People of Japan



Funded by European Union Humanitarian Aid



Funded by the European Union



FOR MORE INFORMATION ON THE SUDAN CRISIS RESPONSE

