

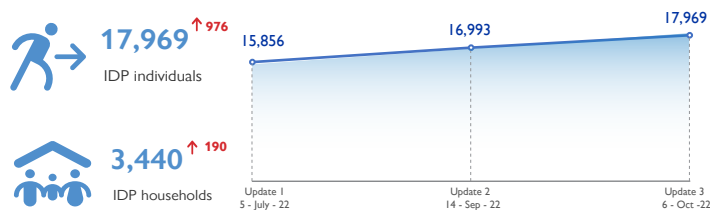
EMERGENCY EVENT TRACKING

Data collection: 6 October 2022



As a subcomponent of the Mobility Tracking methodology (Round Four), the Emergency Event Tracking (EET) tool is deployed to track sudden displacement, provide more frequent updates on the scale of displacement, and quantify the affected population when needed.

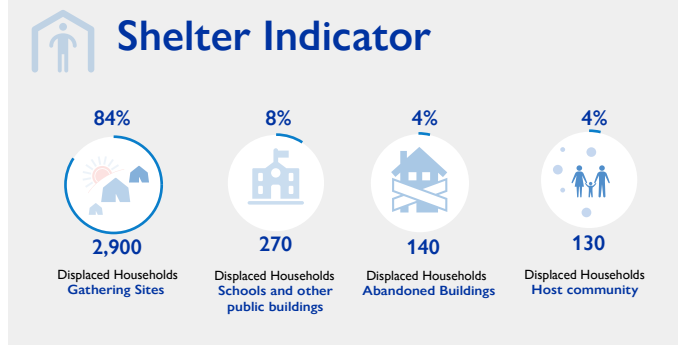
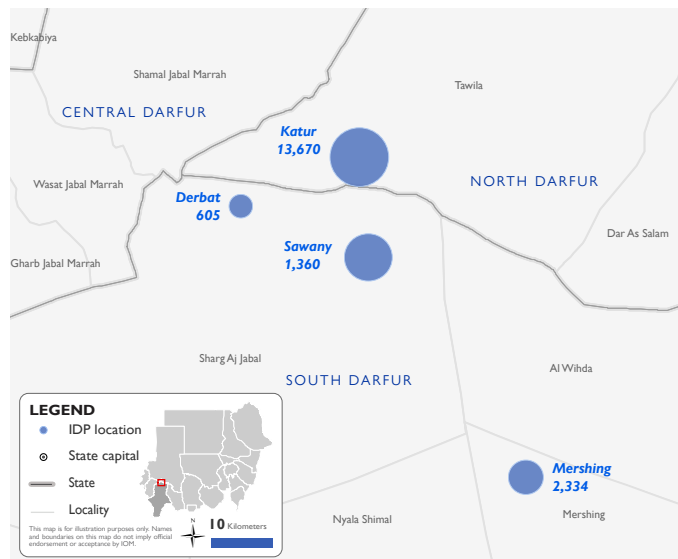
## Event Overview



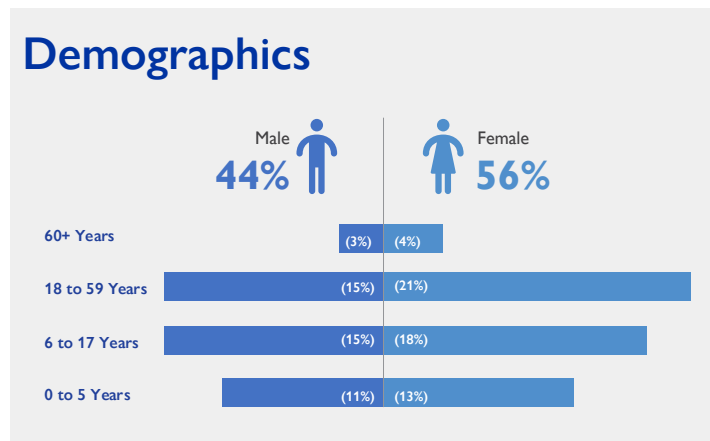
DTM Teams activated EET to monitor displacement resulting from clashes erupting between two factions of the Sudanese Liberation Army in Sharg Aj Jabal, South Darfur on 27 June 2022 over an issue of land ownership. For more information, please see Sharg Al Jabal (Mora), South Darfur (Update 002).

The third EET update estimates a total number of 17,969 IDPs individuals (3,440 households) currently seeking shelter in Katur village (76%) in Tawila locality, North Darfur, as well as Ton Kitir camp (8%) and Sham Alnaseem (5%) in Mershing locality, and Sawany village (8%), Derbat (3%) in Sharg Aj Jabal locality, South Darfur. The IDP caseload was originally displaced from 27 villages across Sharg Aj Jabal locality, South Darfur (86%), and seven villages across Tawila locality, North Darfur (14%).

Field teams report that the increase in the IDP caseload from the previous update can be attributed to additional gathering sites visited by field teams, and not to an escalation in the conflict. For estimates on casualties and losses, please see Update 002. All displaced individuals are Sudanese nationals. At least 1,582 cases of additional vulnerabilities in need of assistance and support were identified by key informants through DTM's Protection indicator. Additionally, DTM Sudan estimates that there are approximately 2,695 persons with disabilities among the IDP caseload.\* Based on a ranking scale, the three priority needs across the caseload are Food, Emergency Shelter, and Non-Food Items.



**IOM DISCLAIMER**  
The opinions expressed in the report are those of the authors and do not necessarily reflect the views of the International Organization for Migration (IOM). The designations employed and the presentation of material throughout the report do not imply the expression of any opinion whatsoever on the part of IOM concerning the legal status of any country, territory, city or area, or of its authorities, or concerning its frontiers or boundaries.  
IOM is committed to the principle that humane and orderly migration benefits migrants and society. As an intergovernmental organization, IOM acts with its partners in the international community to: assist in the meeting of operational challenges of migration; advance understanding of migration issues; encourage social and economic development through migration; and uphold the human dignity and well-being of migrants.



### Return Intention

Data collected through the return intention indicator estimates that the 17,969 IDPs (100%) of the IDP caseload intend to return to their location of origin upon improvement of the security situation.

\*DTM Sudan adopts the WHO global estimate that approximately 15% of the total population are persons with disabilities (PwD).

