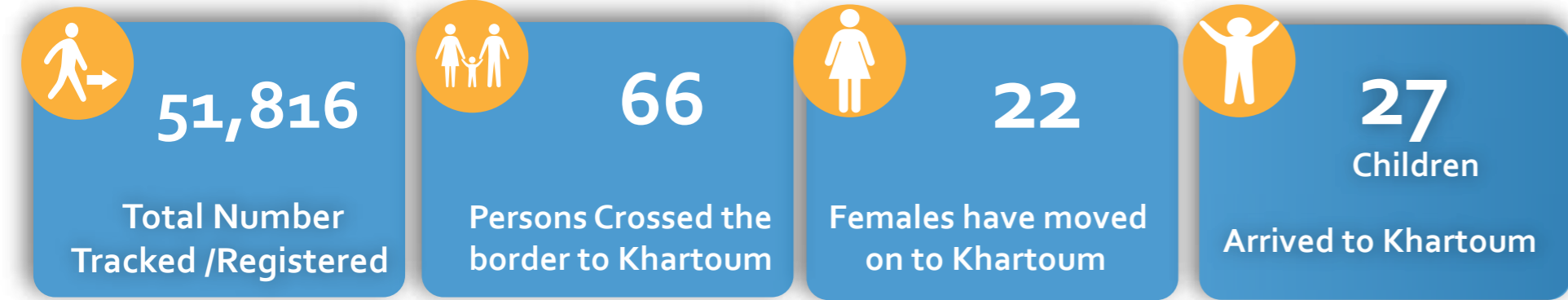


# EXTERNAL SITUATION REPORT ON THE POPULATION MOVEMENTS INTO SUDAN

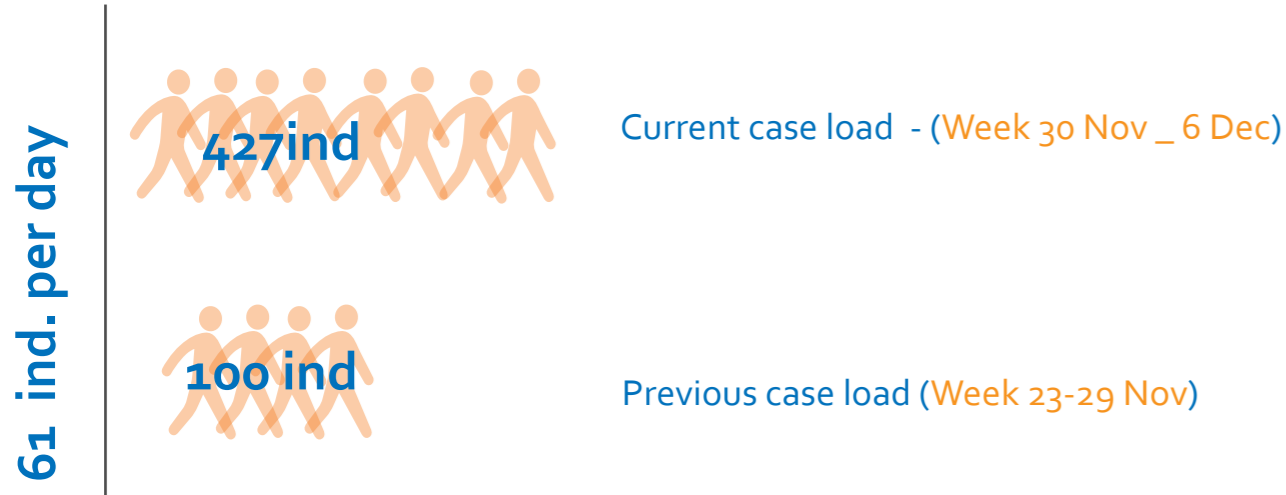
(30 November - 6 Dec 2014)



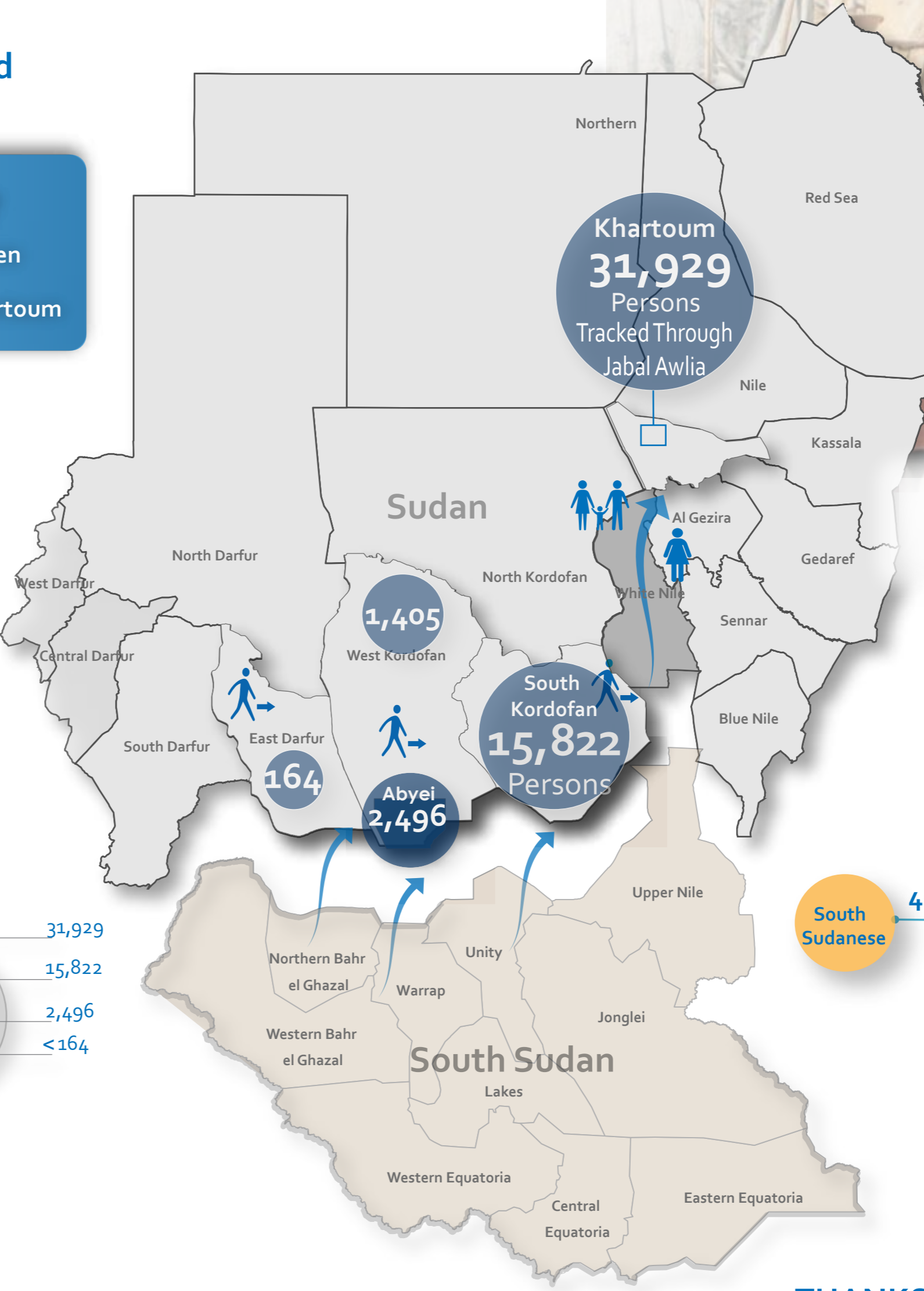
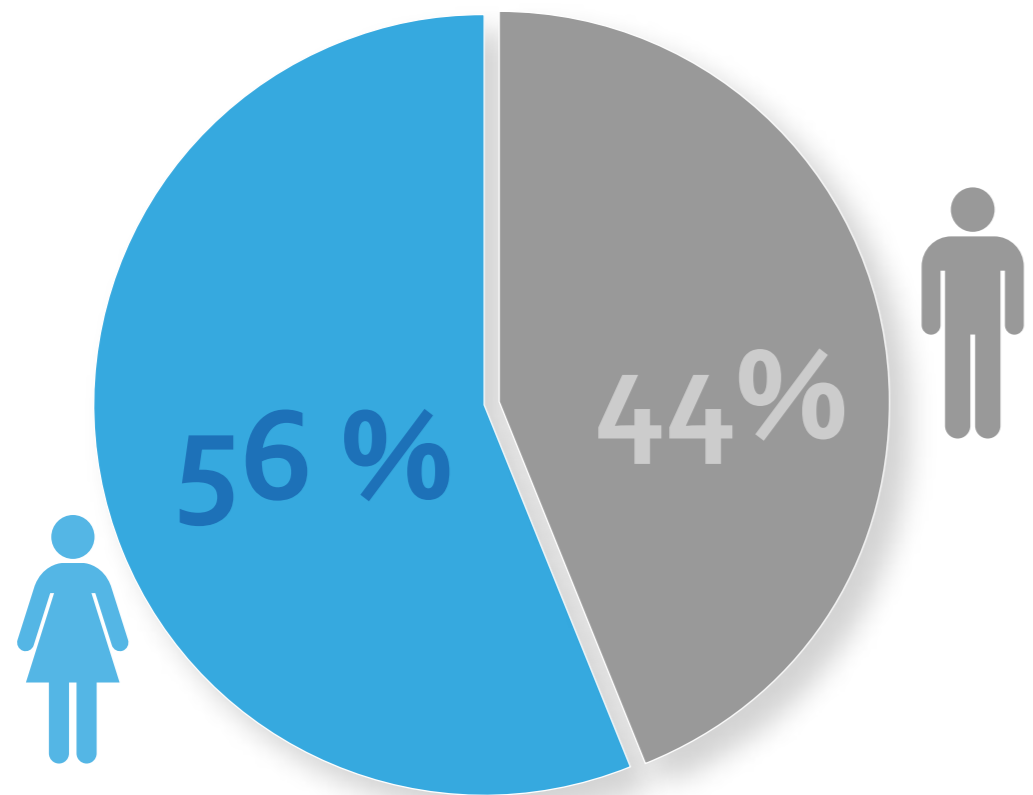
## South Sudanese tracked and registered during the reporting period



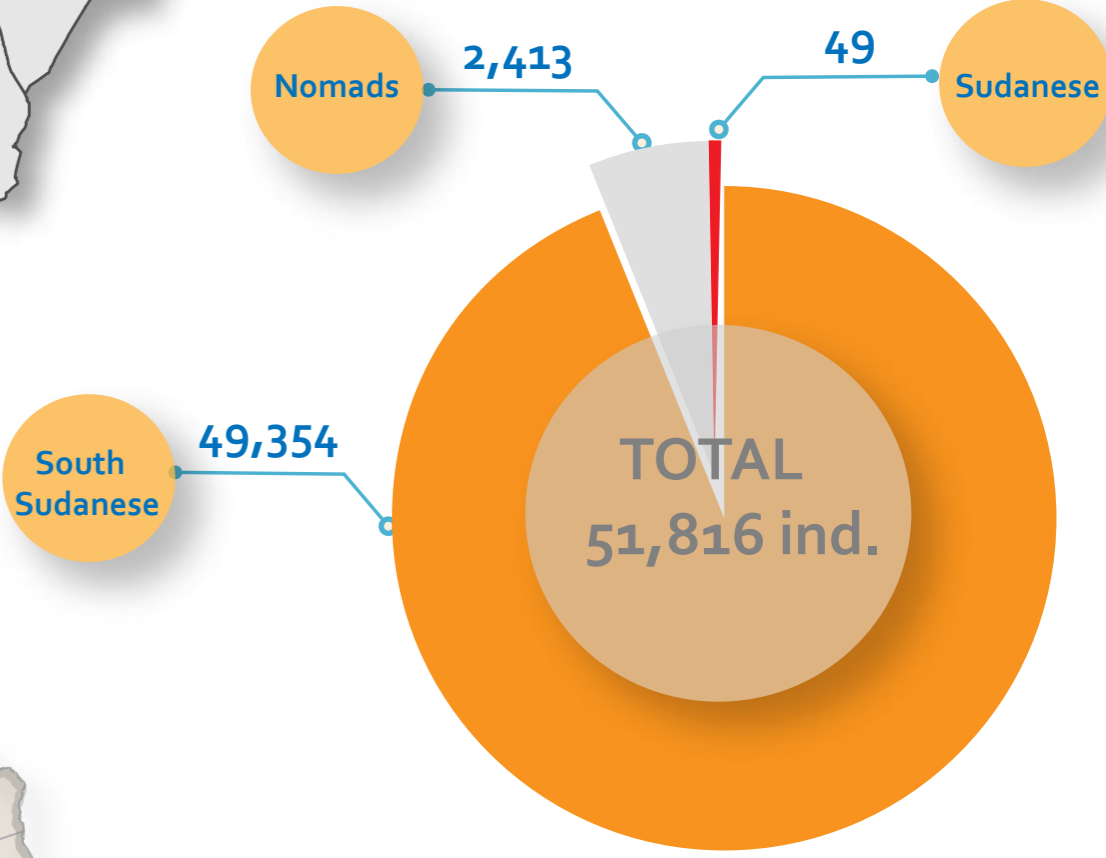
## Previous and Current case load:



## Percentage of women and men tracked heading to Khartoum:



Sudanese, South Sudanese and nomads crossing the borders to Sudan



## THANKS TO THE SUPPORT OF OUR DONORS:



Humanitarian Aid and Civil Protection

# EXTERNAL SITUATION REPORT ON THE POPULATION MOVEMENTS INTO SUDAN

(30 November - 6 Dec 2014)

## Introduction:

During this reporting period (30 November – 6 December), a total of **427** South Sudanese were tracked and registered as entering Sudan; this amounts to **61** persons per day. **361** of these persons crossed the border from Bentiu in Unity State into Kharasana village in West Kordofan. The remaining **66** persons moved north from White Nile State into Khartoum State.

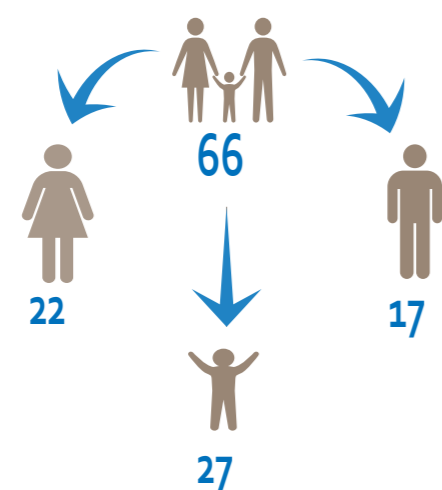
IOM has tracked and registered **51,816** people entering Sudan in total since the beginning of the conflict; **2,413** nomads, **49,354** South Sudanese, and **49** Sudanese. This is equivalent to **4.9%** nomads, **95%** South Sudanese, and **0.1%** Sudanese.

Since the beginning of the conflict, IOM registered **15,822** persons in South Kordofan, and **1,405** in West-Kordofan. The IOM tracking hub at Jabal Awlia has tracked **31,929** persons thus far. The verified numbers in East Darfur and Abyei remain the same at **164**, and **2,496** persons, respectively.

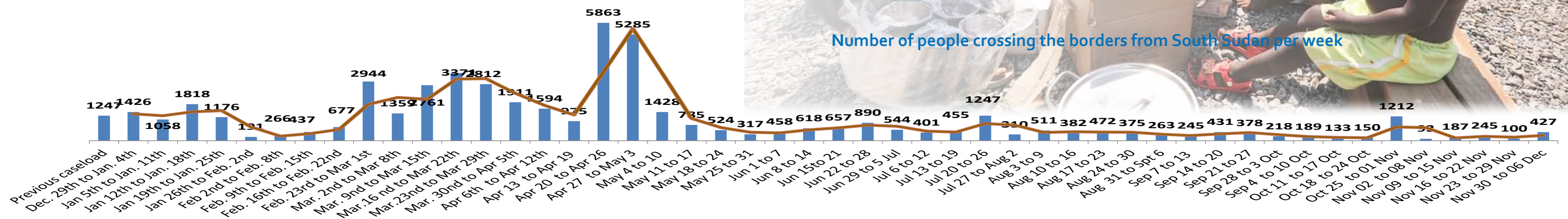
According to UNHCR **113,221** people have arrived from South Sudan since the beginning of the conflict.

## Tracking and Registration

The South Sudanese entering Khartoum State continue moving to the open areas such as Um Dorman, Haj Yousif, Kalakel, Mayo, and Soba. Of the **66** persons tracked by IOM in Jabal Awlia, **22** are females, **27** are children; this means **56%** of all the individuals whom IOM tracked as heading to Khartoum are female, and **44%** are male. Of the persons who crossed the border into West Kordofan, **128** are women, **159** are men, and **74** are children



Khartoum new arrivals



Number of people crossing the borders from South Sudan per week