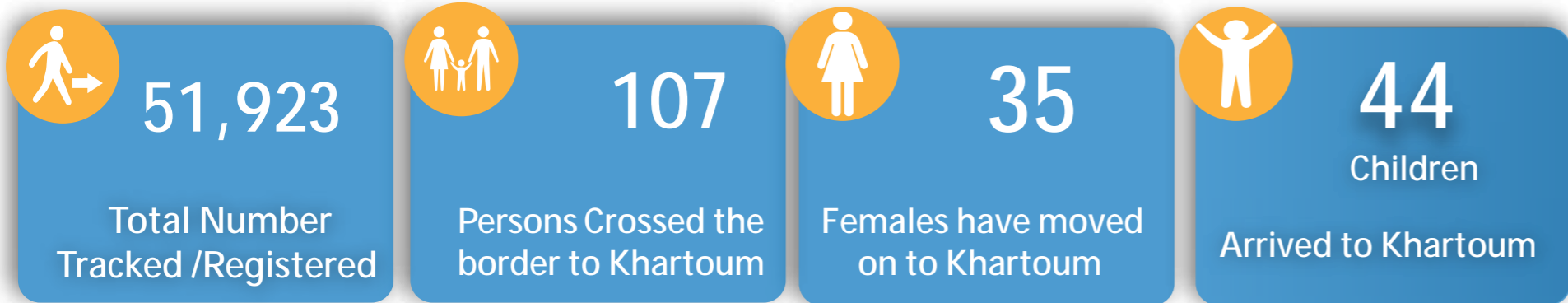


EXTERNAL SITUATION REPORT ON THE POPULATION MOVEMENTS INTO SUDAN

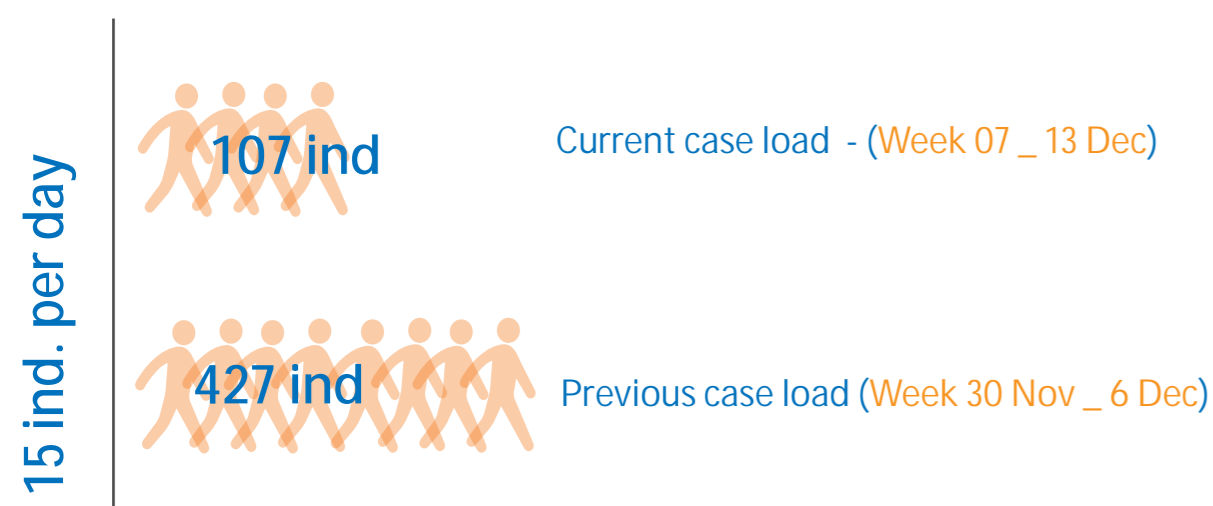
(07 - 13 December 2014)



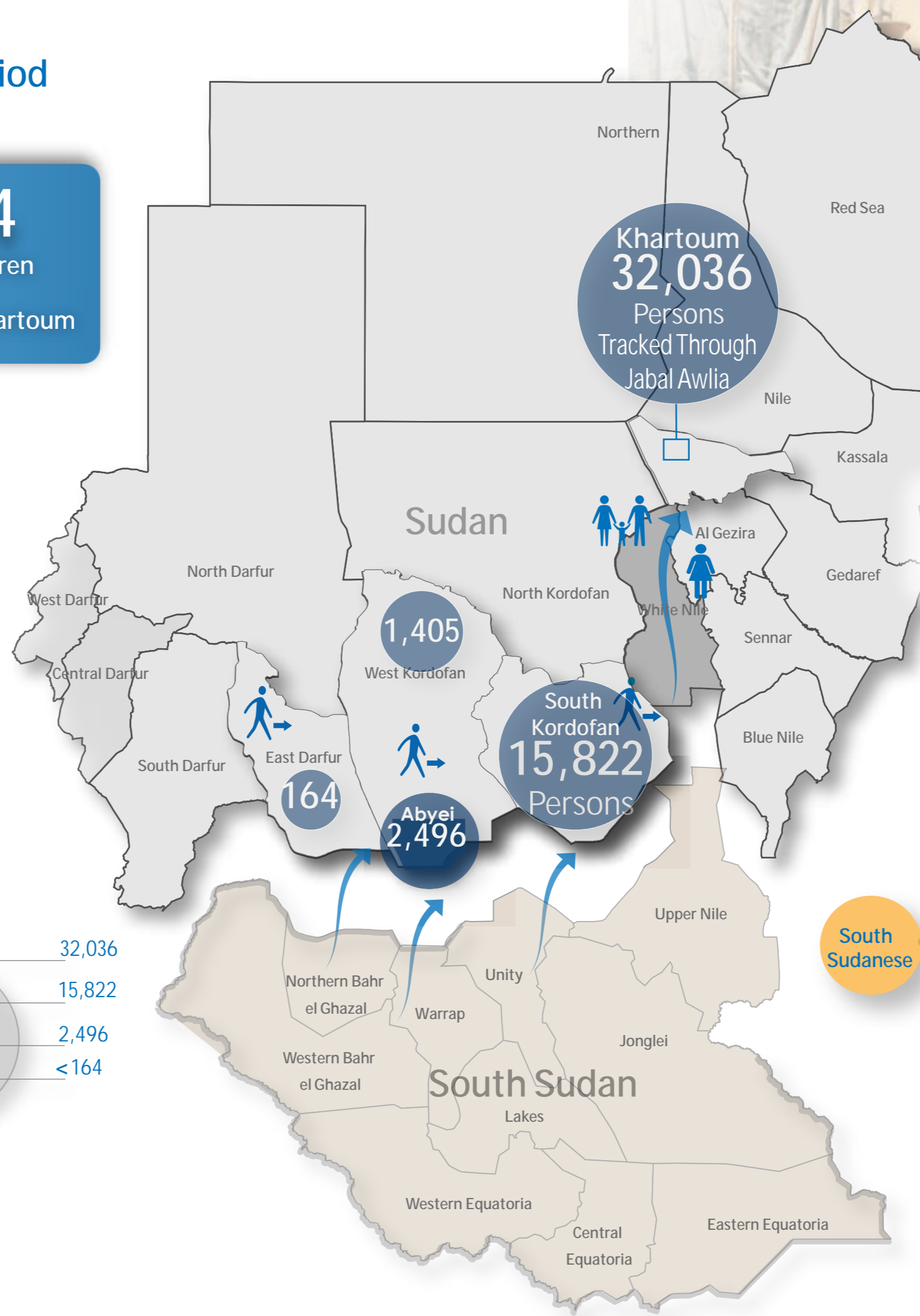
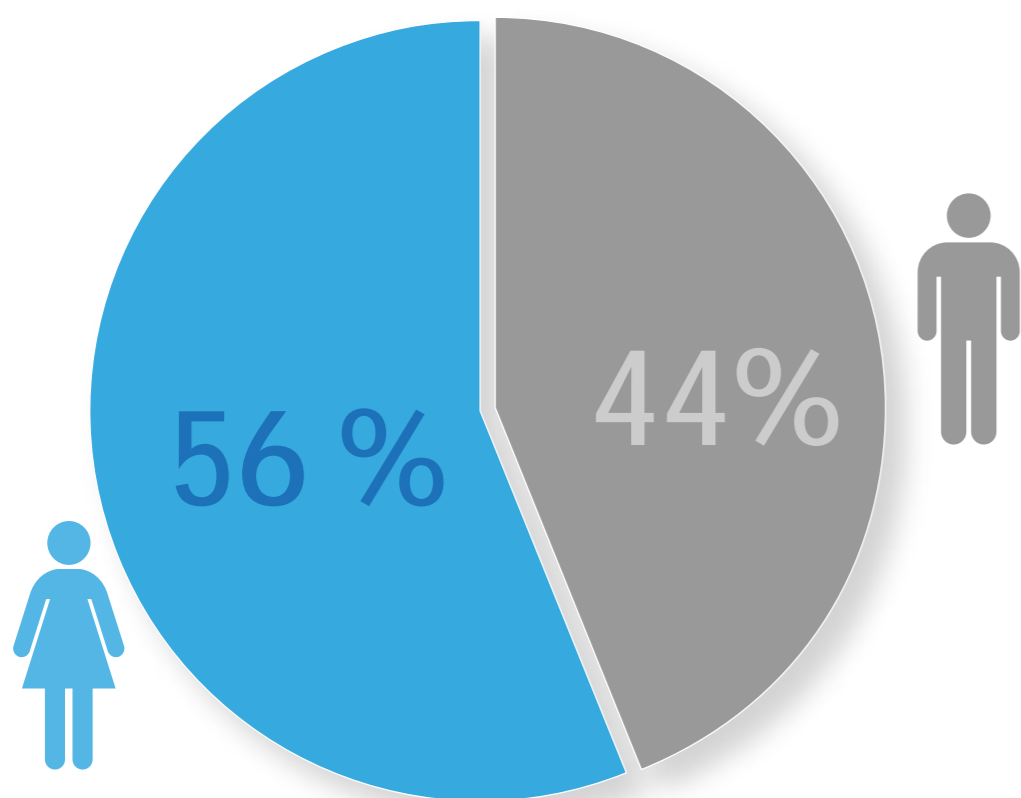
South Sudanese tracked and registered during the reporting period



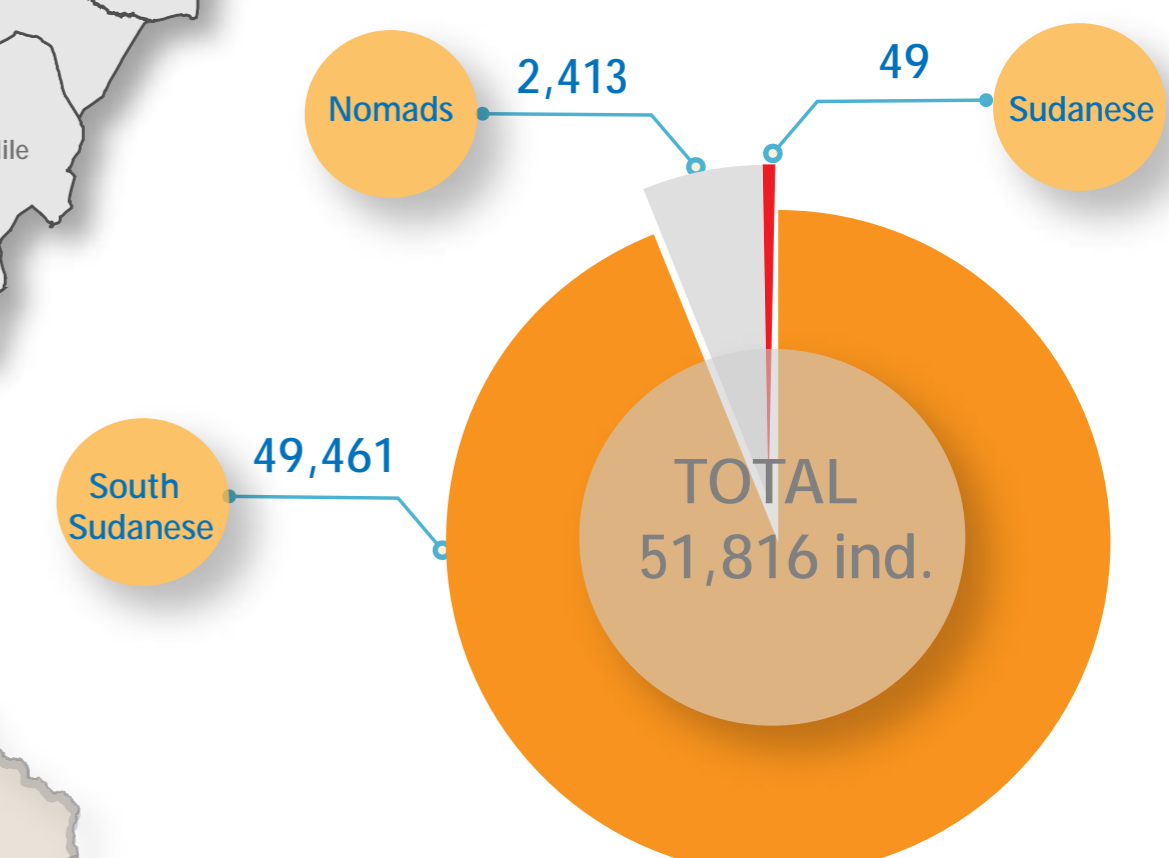
Previous and Current case load:



Percentage of women and men tracked heading to Khartoum:



Sudanese, South Sudanese and nomads crossing the borders to Sudan



THANKS TO THE SUPPORT OF OUR DONORS:



