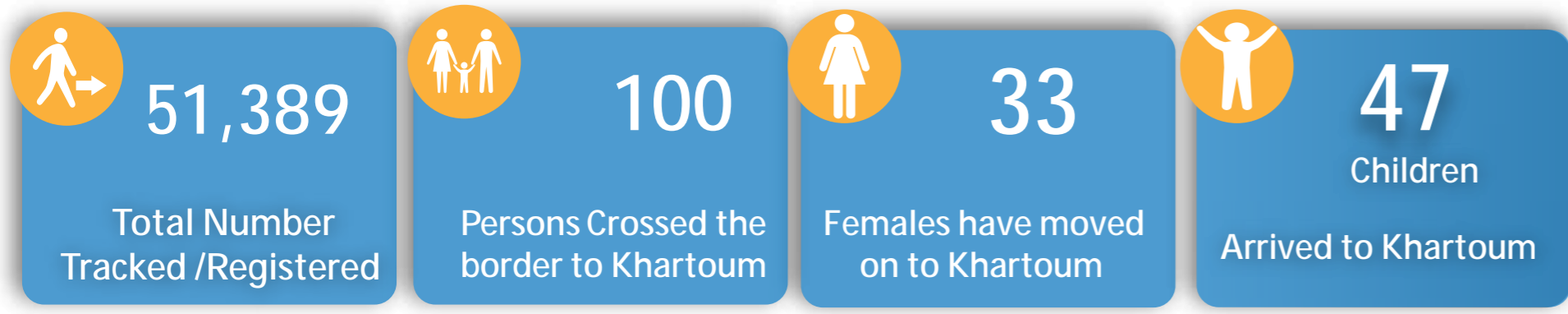


EXTERNAL SITUATION REPORT ON THE POPULATION MOVEMENTS INTO SUDAN

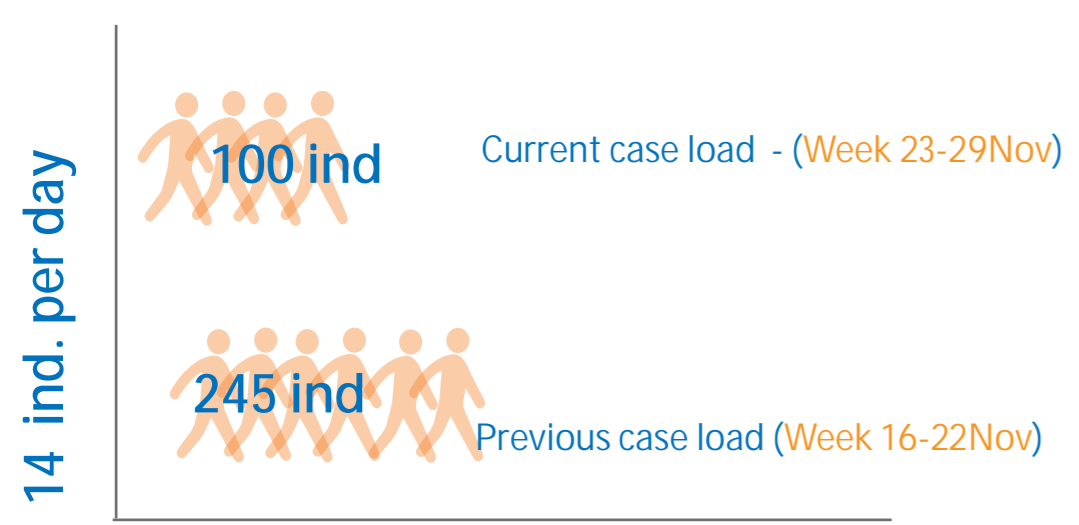
(23-29 November 2014)



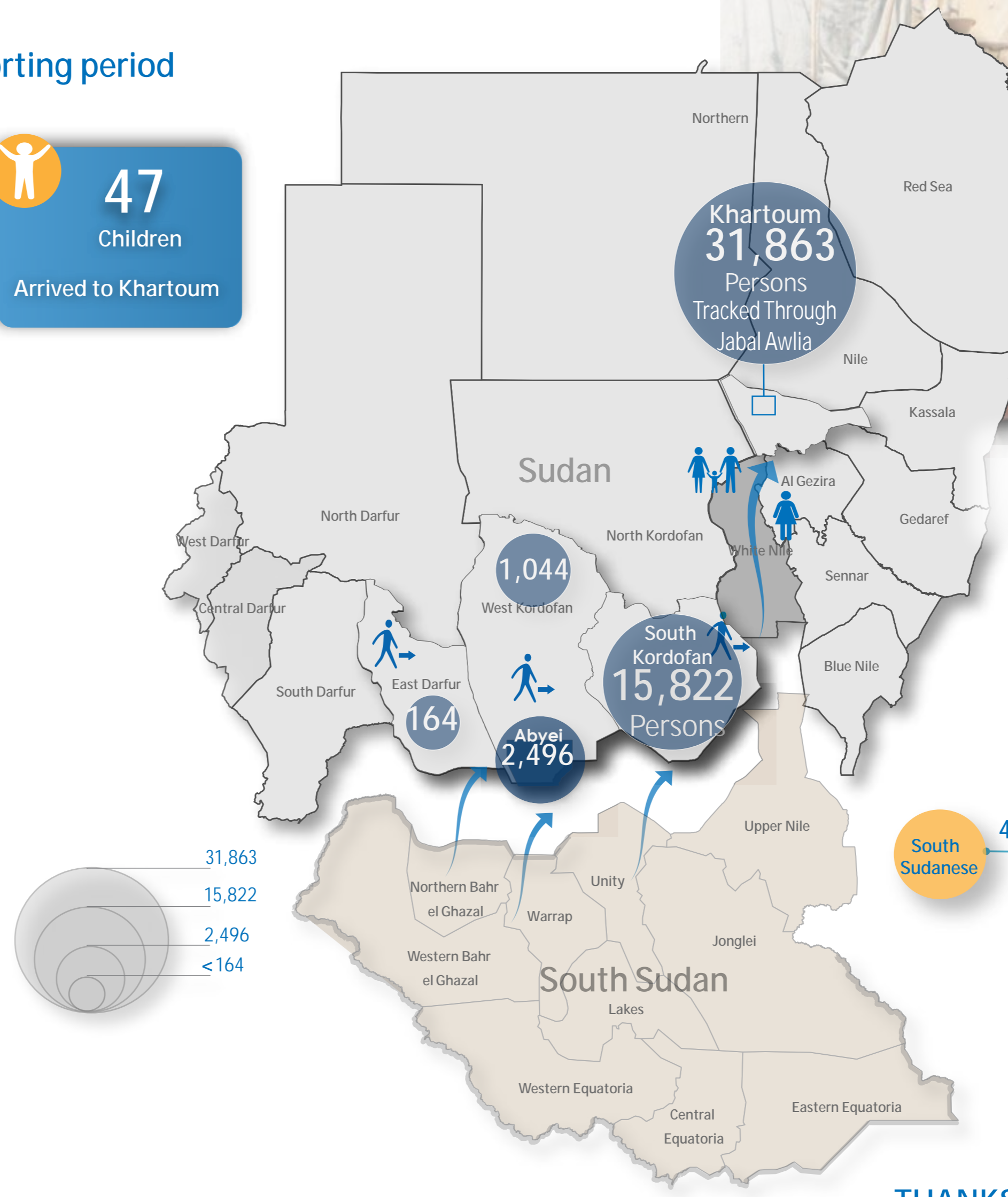
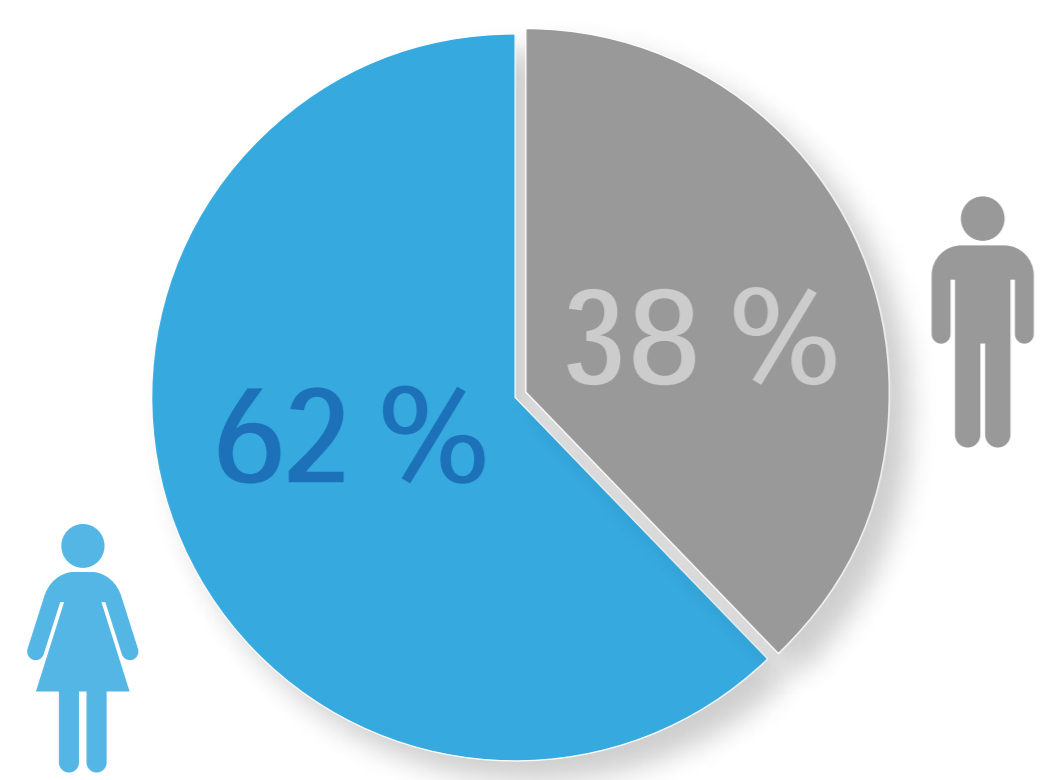
South Sudanese tracked and registered during the reporting period



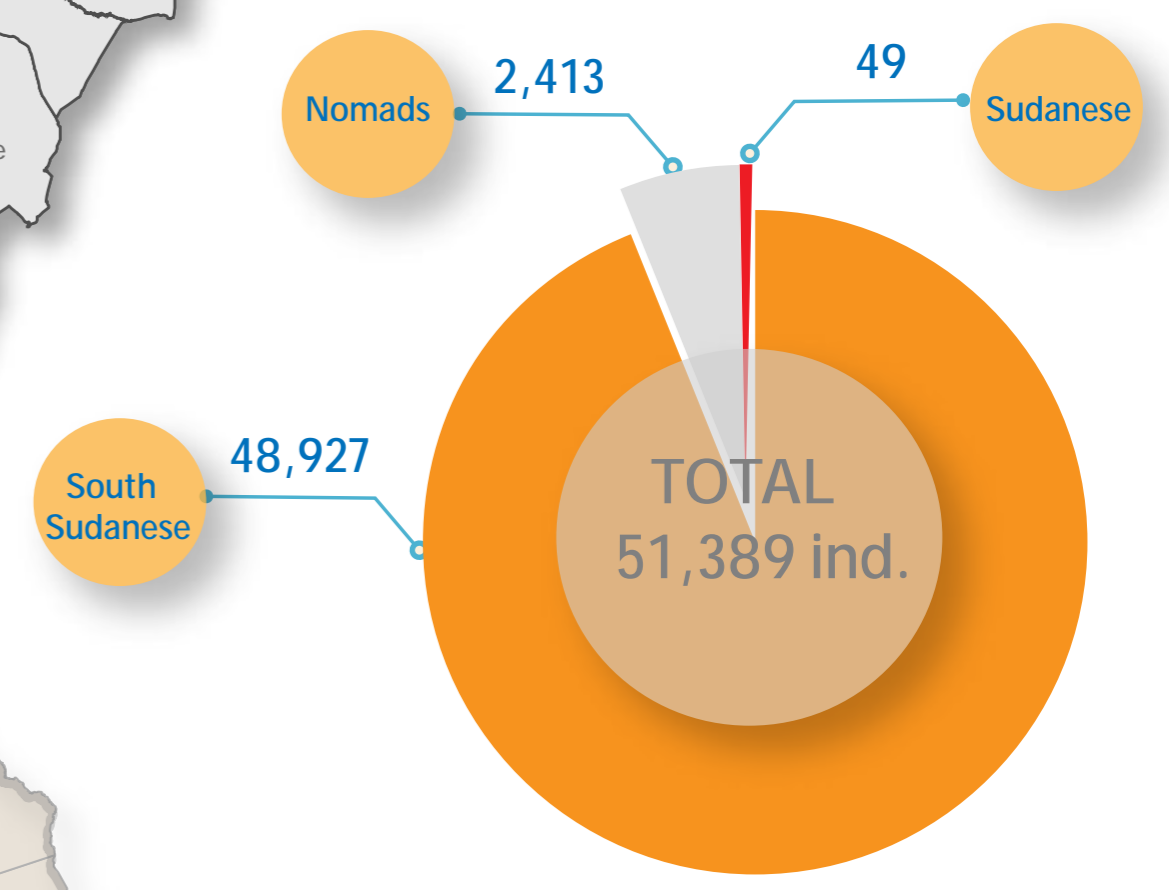
Previous and Current case load:



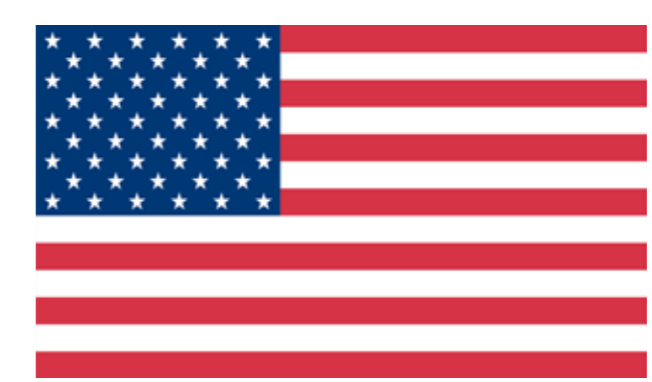
Percentage of women and men tracked heading to Khartoum:



Sudanese, South Sudanese and nomads crossing the borders to Sudan



THANKS TO THE SUPPORT OF OUR DONORS:



Humanitarian Aid and Civil Protection

